



GLOBAL  
CENTER ON  
ADAPTATION



APPLY HERE



2023 LOCAL ADAPTATION  
**CHAMPIONS AWARDS**

---

**Applicants Guidebook**

# ABOUT THE AWARDS

## 2023 LOCAL ADAPTATION CHAMPIONS AWARDS

The GCA Local Adaptation Champions Awards spotlight and reward innovative, exemplary, inspiring, and scalable locally led efforts that address the impacts of climate change and build effective climate resilience among the most vulnerable communities, sections of society, and individuals who are at the frontlines of the greatest existential threat faced by humankind. This year, after the success of 2022, we are relaunching the Awards with new categories as we expand our reach and continue to highlight exceptional locally led efforts around the world.

### WHO CAN APPLY?

The Awards are open to any individual, organization, or group of partners worldwide, who have implemented or are in the process of implementing climate change adaptation/resilience interventions.

### DEADLINE FOR APPLICATIONS

The call for applications will be open from **1-31 August 2023**.

### PRIZES IN 2023

**20 NOMINEES**

20 nominees will benefit from publicity around their nomination for the Awards.



**4 WINNERS**

**€15,000 EACH**

Four winners will receive a cash prize of €15,000 and be invited to an Award Ceremony at **COP28 in Dubai**, which will take place from **30 November to 12 December 2023**.

Winners will be required to provide a spending proposal of how they intend to use the cash prize and to report on their progress up to one year after the disbursement of the prize. DAI Global will support the monitoring of the activities listed in the spending proposal, through video calls, digital surveys, and requests for photos and video materials.



Join us on **15 August 2023 at 14h00 GMT +1**, for a live Q&A about the Awards.

Visit <https://adaptationportal.gca.org/llahub/llachampions> to register for the event and find out more.

# AWARDS CATEGORIES



## CAPACITY BUILDING

This category includes innovations and initiatives that support a continuous and iterative process of learning for local communities, governments, and organizations. These innovations and initiatives should be based on established need from the participants and enable inclusive local decision-making that is sustained beyond project cycles, for instance by leaving an institutional legacy; facilitating skills for technical and soft institutional attributes (like collaborative leadership, trust, and network management); and/or allowing local actors to autonomously increase their capacity and share skills over time. Examples include institutionalizing adaptation capacity in local organizations; support for peer-to-peer learning; and support for local experts and champions.

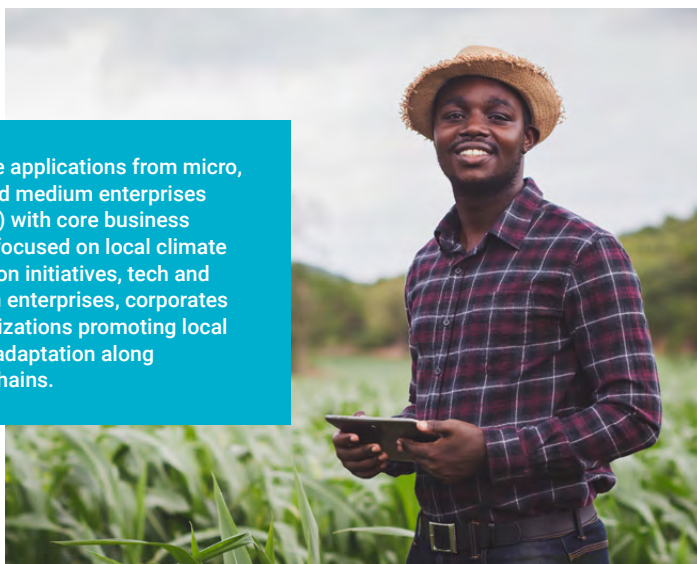
We invite applications from non-governmental organizations (local, national, and international), universities, research institutes, think tanks, governments, and entrepreneurship support organizations.



## BUSINESS ADAPTATION SOLUTIONS

This category is for small and large businesses that have supported leadership by local communities and governments in adaptation efforts; helped address structural inequalities faced by women, youth, children, disabled, displaced, indigenous peoples and marginalized ethnic groups that make them more vulnerable to the impacts of climate change; and/or developed and made easily available adaptation solutions or technologies that address local climate-related vulnerabilities.

We invite applications from micro, small and medium enterprises (MSMEs) with core business models focused on local climate adaptation initiatives, tech and non-tech enterprises, corporates or organizations promoting local climate adaptation along supply chains.



# AWARDS CATEGORIES



## WOMEN IN LEADERSHIP

We invite applications from women championing the cause of local adaptation either as a leader of a community, or as part of government and non-government organizations (local, national, and international); educational institutions; the private sector (micro, small and medium enterprises, corporates, industrial chambers, entrepreneurship support organizations, etc.), and international organizations.



This category is for local, national, or global woman leaders who design, champion, and/or lead adaptation and climate resilience efforts in and for local communities. Applications are invited from, or on behalf of, women leaders at the local, national or global level who have led in the design or implementation of efforts that demonstrably build climate resilience – particularly of the most vulnerable – within communities.



## INNOVATION IN DEVOLVING FINANCE

This category is for organizations, projects, programs, and initiatives using innovative models that provide flexible, long-term, patient and/or predictable funding for adaptation at the local level. The funding should be made available in ways that enable and support local determination of climate challenges, priorities, and solutions.

We invite applications from financial institutions (lending firms, insurance firms, commercial banks, investment banks, central banks, development banks, or similar), private sector actors (MSMEs, entrepreneurship support organizations, corporates, industrial chambers, etc.), informal finance organizations, local funds for adaptation (climate funds, national funds, local, national and global non-governmental organizations).



# AWARDS TIMELINE



**1 August**

**APPLY**

Call for applications opens.



**15 August**

**Q&A**

Online session for applicants.



**31 August**

**CALL FOR APPLICATIONS  
CLOSES**

Screening & longlisting starts.



**1-8 September**

**REQUEST FOR  
INFORMATION**

20 nominees are invited to provide further information.



**11-28 September**

**SHORTLISTING**

Technical Advisory Group members create a shortlist of candidates.



**3 October**

**NOMINEES PUBLISHED**

List of shortlisted candidates published on the GCA channels.



**11-27 October**

**FINAL ASSESSMENT**

High-level Jury selection of winners.



**30 November-7 December**

**AWARD CEREMONY**

Winners announced at COP28 in Dubai, UAE.

# SELECTION PROCESS

## AM I ELIGIBLE TO ENTER?

Your entry should meet the following criteria:

- ✔ The intervention addresses climate change impacts or intentionally builds resilience against the impacts of climate change over time.
- ✔ The solution is aimed at the most vulnerable communities, sections of society and individuals experiencing climate impacts..
- ✔ Solutions are locally led and demonstrate how to implement at least one of the eight **Principles of Locally Led Adaptation** in practice.
- ✔ The intervention has already been, or is being, implemented and results are demonstrable.
- ✔ The entry fits into one of the four categories.



CAPACITY BUILDING



BUSINESS ADAPTATION SOLUTIONS



WOMEN IN LEADERSHIP



INNOVATION IN DEVOLVING FINANCE

*If applicants feel that their submission fits more than one of the categories, they may select a second-choice category. The selection team will consider the applicant's prioritization but may propose reassigning an application to a second-choice category, to ensure it has the best chance of progressing in the Awards process.*

## REQUESTED MATERIAL

The application form contains a series of questions and spaces to upload files. Please make sure to respond to all questions and provide:



A written description of the project/initiative or solution in a story format.



A short video: an interview with participants, a presentation of the intervention, and footage of the intervention.

(2 minutes maximum. The video does not need to be professionally produced – simple videos shot on mobile phones are also welcome.)



Photos, infographics or other visual material to support your story.

(We are not looking for professional and high-definition photos or graphs. Rather visual elements that illustrate the descriptive text and complement the 2-minute video).

*Incomplete applications will be automatically disqualified.*

## HOW DOES THE SELECTION PROCESS WORK?

Applications will be ranked according to a points-based system based on five main criteria:

**Effectiveness and community impact.**

**Scalability and achieved (or potential for) replication.**

**Devolution of decision-making, particularly by the most vulnerable.**

**Gender and social inclusion.**

**Expected use of Award money.**

The first top **20 shortlisted applicants (5 from each category)** will be nominated for the Awards and requested to provide additional information to support their entry.

Thereafter, a Technical Advisory Group (TAG) will review the shortlisted candidates in their respective categories. The TAG will select **two candidates per category**, and a High-level Jury will make the final selection of winners.

# FREQUENTLY ASKED QUESTIONS

## What are the GCA Local Adaptation Champions Awards?

The Local Adaptation Champions Awards spotlight and reward innovative, exemplary, inspiring, and scalable locally led efforts that address the impacts of climate change and build effective climate resilience among the most vulnerable communities, sections of society, and individuals who are at the frontlines of the greatest existential threat faced by humankind.

## What are the prizes?

20 nominees will benefit from publicity around their nomination for the Awards. Four winners will receive a cash prize of €15,000. All winners will be invited to an Award Ceremony at COP28 in Dubai, which will take place from 30 November to 12 December 2023.

## Who can enter the competition?

The Award is open to any individual, organization, or partner network that has implemented or is in the process of implementing, climate change adaptation/resilience interventions that follow one of the eight Principles of Locally Led Adaptation.

If you represent an organization or a group of partners, make sure to request permission to submit an application on their behalf to be considered for this Award.

## How can I apply?

Access the [GCA LLA Awards website](#) and click on "Apply here" for the online application form.

## About the application

### What is the deadline for applying?

The call for applications will be open from **1-31 August 2023**.

### What type of information should I submit?

You will be asked to provide:

- A short description
- Photos or infographics
- A video of 2 minutes or less

Use your creativity to build your case. Remember that we want to hear your story. Please refrain from copying and pasting intervention design documents. Instead, use your voice and the voices of those who have participated in or benefited from your solution to tell us what you did, how you got there and what difference it has made.

### What kind of videos are we looking for?

Videos should be shorter than two minutes. Your submission should help us get a better sense of your achievement, such as interviews with community members who have participated in or benefitted from your intervention or footage of the proposed solution in action. We are not looking for high-quality, polished videos. A video taken with your cellphone camera will do. What's important is that it contributes to your story and that it gives us a glimpse of the impact of your work. The video should not exceed 30 Mb.

## What kind of photos and infographics are we looking for?

We are not looking for professional and high-definition photos or graphs. Rather visual elements that will illustrate your short descriptive text and be complementary to the two-minute video. Photos can show people (participants in developing, implementing, and benefitting from your solutions) or products. Use your creativity to build your case.

They can showcase a situation before and after your initiative was put in place, or show the evolution of your intervention, or your work. In case you add infographics, those can show processes, maps, diagrams – anything that will help the overall understanding of your intervention. There is no limit in terms of the number of photos and/or graphic elements to add to your application.

## What happens if I am shortlisted in the top 20?

If you make it to the top 20 nominees for the Awards, we may request permission to use your videos, photos or infographics as part of our promotional campaign for the Awards. Please ensure you seek permission from those appearing in your video/photos before filming them/taking their pictures and sending us the footage.

## Can I fill out my application in a language other than English?

Yes. You can apply in the language of your choice if you include a transcript or subtitles for your videos in English, French, Spanish or Portuguese. Please bear in mind that text submitted in a language other than those listed above will be machine-translated, a process that may entail the loss of meaning and inaccuracies.

## Can I fill out the form offline?

You cannot fill out the form offline, but you can download a copy to prepare your answers. You can also start and come back later to complete it if you use the same computer and browser. Once submitted, you will not be able to make changes to your application.

## Can I submit more than one application for the same intervention?

No. You may only submit one application for each intervention. If you feel your application fits two of the categories, you may select a second-choice category in the corresponding question. Please ensure that you only have one person in your organization submit an application.

## Can I submit applications for more than one intervention?

Yes. If you manage several eligible interventions, you may submit an application per intervention.

## What are the eight principles of locally led adaptation?

The eight **Principles of Locally Led Adaptation** are as follows:

- 1 Devolving decision-making to the lowest appropriate level.
- 2 Addressing structural inequalities faced by women, youth, children, disabled and displaced people, indigenous peoples and marginalized ethnic groups.
- 3 Providing patient and predictable funding that can be accessed more easily.
- 4 Investing in local capabilities to leave an institutional legacy.
- 5 Building a robust understanding of climate risk and uncertainty.
- 6 Flexible programming and learning.
- 7 Ensuring transparency and accountability.
- 8 Collaborative action and investment.

## What are examples of eligible interventions?

Both adaptation and resilience building interventions are eligible. Adaptation refers to specific processes or actions that enable individuals or systems to adapt to the impacts of a changing climate, whereas resilience describes the capacity or ability of individuals or systems to anticipate and cope with shocks, and to recover from climate impacts. Interventions that are not specifically identified as adaptation activities but build climate resilience and demonstrate models for strengthening local leadership in projects/initiatives/activities are also welcome.



## What are the minimum criteria for eligibility?

- The intervention addresses climate change impacts and/or builds resilience against climate impacts and/or has proven its effectiveness in the development context and can be used to build climate resilience of the most vulnerable.
- The intervention aims to build the climate resilience of the most vulnerable communities, sections of society and individuals experiencing climate impacts (shocks and slow onset).
- Interventions should be locally led and demonstrate how to implement at least one of the eight Principles of Locally Led Adaptation in practice.
- The entry fits into one of the four categories.
- The intervention presented has already been, or is being, implemented and results are demonstrable.

### **I have only recently started implementation. Can I still be considered for the Award?**

Winning entries will have to show that they are indeed effective and have an impact. It may be too early for your intervention to be considered for the 2023 Award but make sure to document your work as you go along and save it for next year's Awards.

### **My intervention has helped communities build resilience to climate change, but it is not strictly an adaptation intervention. Can I still apply for the Award?**

Yes. If you can make a compelling case that the people you have been working with have been able, because of your action, to build resilience or adapt to climate change, and if your intervention follows one of the eight Principles of Locally Led Adaptation, then you are welcome to submit an entry.



## About the selection process and the prize

### **How does the selection process work?**

Applications will be screened against a set of pre-defined criteria after the call for applications closes. The top 20 applicants (5 from each category) will be reviewed by the TAG, and two entries per category will be forwarded to the High-level Jury for final selection of winners.

### **What happens after I am nominated?**

Nominees will be requested to provide evidence to support their entry and will have one week to provide such evidence. Delays in providing the requested documentation will result in disqualification from the award process. Nominees who send in their supporting documents will be listed on the GCA website.

### **Are there any conditions/obligations for the use of the €15,000 cash prizes?**

Although there are no conditions attached to the cash prize per se, the intent of the Awards in general, and of the cash prize in particular, is to allow for small initiatives to gain visibility and to scale up and develop. GCA will support the finalist to develop the activities that the cash prize will be used for, and follow up to support monitoring of progress.

# AVOID POTENTIAL CONFLICTS OF INTEREST

**Conflict of interest** is generally recognized as a situation where there is a risk that a professional judgment or decision could be influenced by some secondary interest. In the context of the GCA Awards Team, GCA Technical Advisory Group members and the Jury (hereafter the GCA Selection Committee), conflicts of interest may derive from a committee member's relationship with a nominee and/or affiliation with a nominee's institution. To avoid the appearance of any impropriety, members of the GCA Selection Committee will adhere to the following guidelines.

**If conflicts of interest are identified, the conflicted committee members will recuse themselves from discussions related to the corresponding nominations.** Recusal means that the GCA Selection Committee member will refrain from any commentary or input regarding the conflicted nomination before or during the decision-making process and will absent him/ herself during committee discussions of the conflicted nomination.

**The GCA Selection Committee representatives do not serve as nominator or endorser** for any nomination submitted for an Award.

**The GCA Awards Team or GCA Technical Advisory Group members cannot be directly involved in nominations prior to their submittal.**

**Members of the GCA Selection Committee must maintain confidentiality about the internal discussions of the committee.**

Information about committee deliberations should not be shared with anyone outside the committee, nor should the recipient be discussed until GCA has announced them publicly.

**Members of the GCA Selection Committee do not provide feedback to unsuccessful candidates.** If a member is asked for feedback; this policy should be cited.

**At the Award selection stage, members of the GCA Selection Committee will be asked to self-identify any relationships/affiliations that might be perceived as a source of potential bias and inform the team of the conflicts of interest before any candidates have been discussed.** Members of the GCA Awards Team, GCA Technical Advisory Group members and the Jury will be asked to identify any candidates with whom they have had personal or working relationships, any other case where judgment could be affected, or identify any candidates from their current institution or one where they worked previously.